

Voltage Converter 24V-12V 6A

350-164

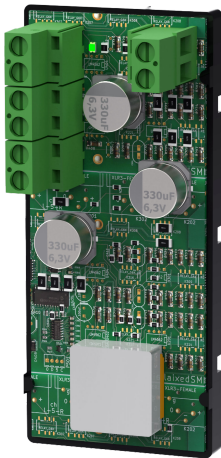
Publication date 2023-11-28



Table of Contents

1. Technical specifications	3
2. Mounting in battery backup	3
3. Card description	5
4. Connection of load	6
5. Technical data	6
5.1. About translation of this document	7
6. Address and contact details	7

1. TECHNICAL SPECIFICATIONS



Voltage converter 24-12V 6A is an optional card to convert 24 V to 12 V.



CAUTION

ATTENTION! Heat source on the card!

Cooling flange must sit with free air flow (at least 50 mm) and upwards.

Cables must not be laid over the heat sink.

2. MOUNTING IN BATTERY BACKUP

The card is delivered mounted in its plastic casing, for easy installation.

If the card has come loose, snap it back into the plastic casing.

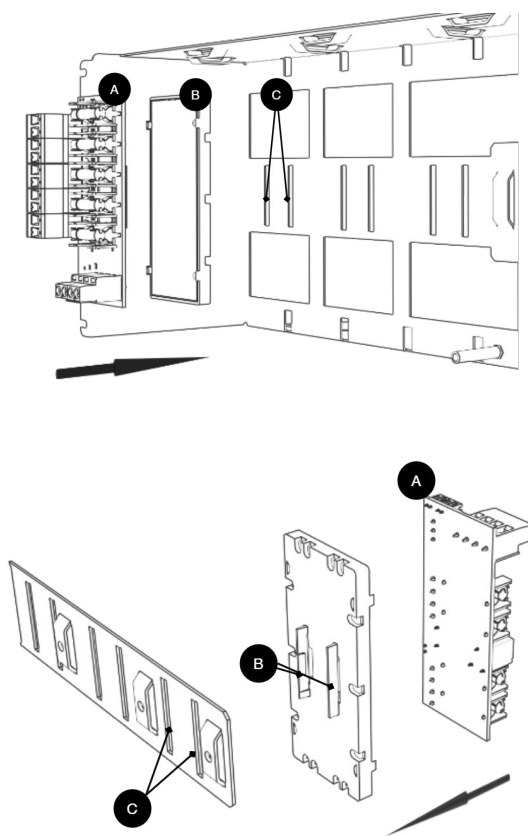
Mount the card on any card slot in the enclosure, leave space for cables.





IMPORTANT

Install the board before screwing on wiring or commissioning.

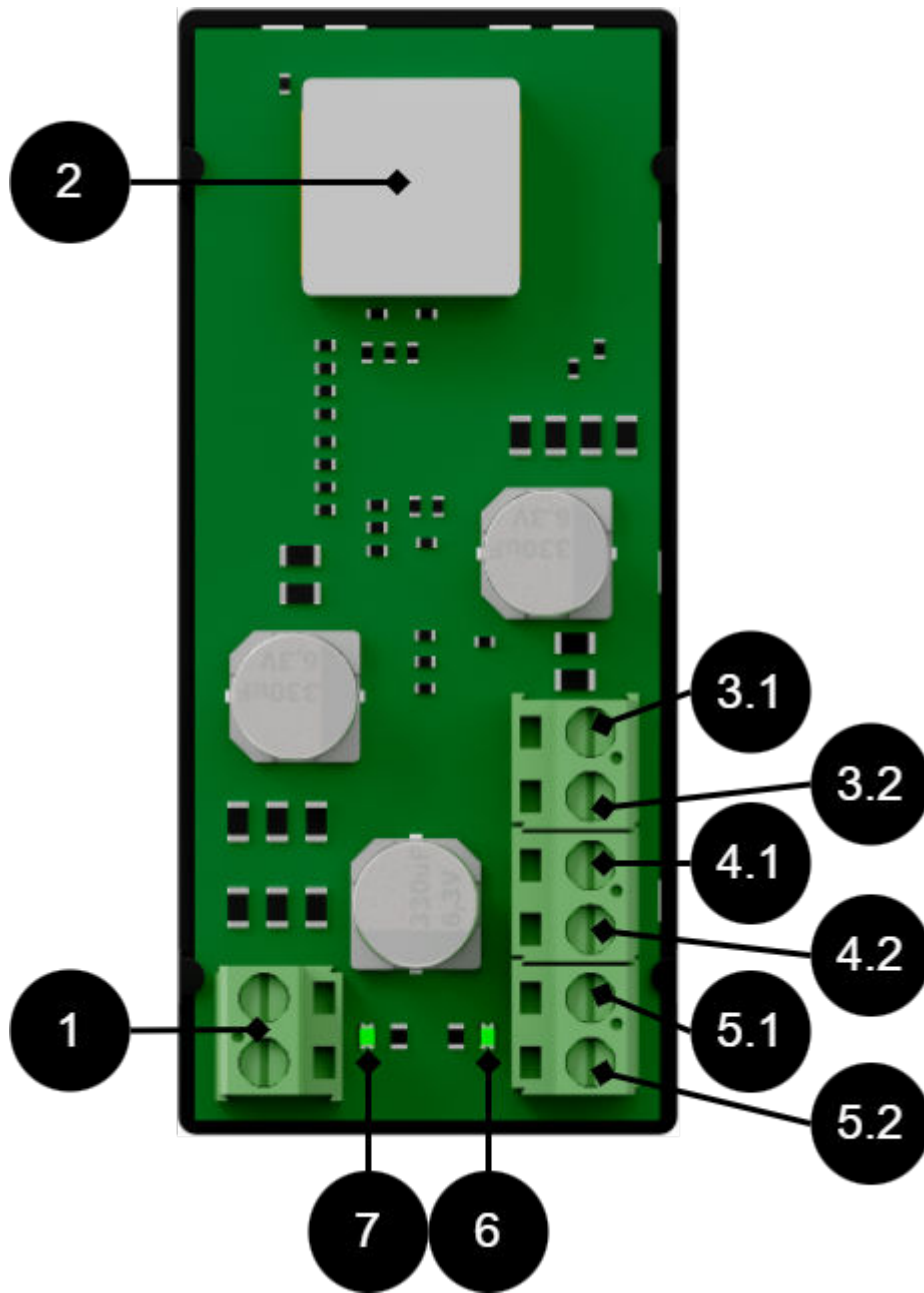


Letter	Explanation	Comment
A	Optional card	Optional card comes mounted on plastic housing from factory. Has it come loose? Snap it back on before mounting the card.
B	Plastic casing	The plastic casing has hooks for attaching slots in the plate.
C	Place for plastic casing	Slits in sheet metal to snap the plastic bracket.





3. CARD DESCRIPTION



No	Explanation
1	Load output 12 V +/-
2	Heatsink. Must sit with free air flow (at least 50 mm). Cables must not be laid over the heat sink.
3.1	CTRL +.Low (0) in turns off output.
3.2	CTRL -. High (1) in turns off output.
4.1, 51	24 V in -, dual inputs, use any.
4.2, 52	24 V in +, dual inputs, use any.
6	Green LED, lights up when incoming power is connected.
7	Green indicator lights up when output is connected.



4. CONNECTION OF LOAD



CAUTION

Connect load before commissioning battery backup.

1. Connect load wiring to load output.
2. Control signal is connected to 3.1, 3.2 (terminal CTRL).
3. Enable battery backup. See battery backup manual.



CAUTION

Maximum load is 6 A, the card's load must not exceed 6.5 A.

Average current must never exceed 80% of total maximum load.

5. TECHNICAL DATA

Article name	Voltage converter 24V-12V 6A
Article number 24-12V	A-VC002406A01LM01
Article number 24-9V	A-VC002406A02LM01
Article number 24-15V	A-VC002406A03LM01
Product description	Voltage converter 24 V to 12 V.
Measure	85 x 37 mm.
Power (card) consumption	20mA
Entrances	Two entrances. (For alternative power supply when changing the power supply unit. In order not to interrupt the load voltage.) A terminal can be used as a jumper to the next optional card, (only if the battery backup has room for two cards).
Voltage in	24 V
Voltage out	12 V (Alternative output voltage (9 V-15 V) can be configured from the factory, cannot be set afterwards)
Outputs	A cargo outlet. Controllable via CTRL (input).
Fuses	Output is current limited, so no load fuse is needed.
Max load	6 A in total. Average current must never exceed 80% of maximum load.
Indication	Green indicator lights up when output is connected. Green LED, lights up when incoming power is connected.

Manufactured in Milleteknik's factory in Partille, Sweden.





5.1. About translation of this document

User manual and other documents are in the original language in Swedish. Other languages are machine translated and not reviewed, errors may occur.

6. ADDRESS AND CONTACT DETAILS

Milleteknik AB
Ögärdesvägen 8 B
S-433 30 Partille
Sweden
+46 31 340 02 30
info@milleteknik.se
www.milleteknik.com



This page is intentionally left blank.